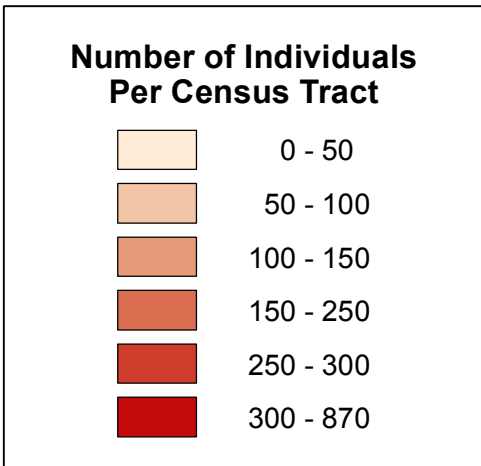
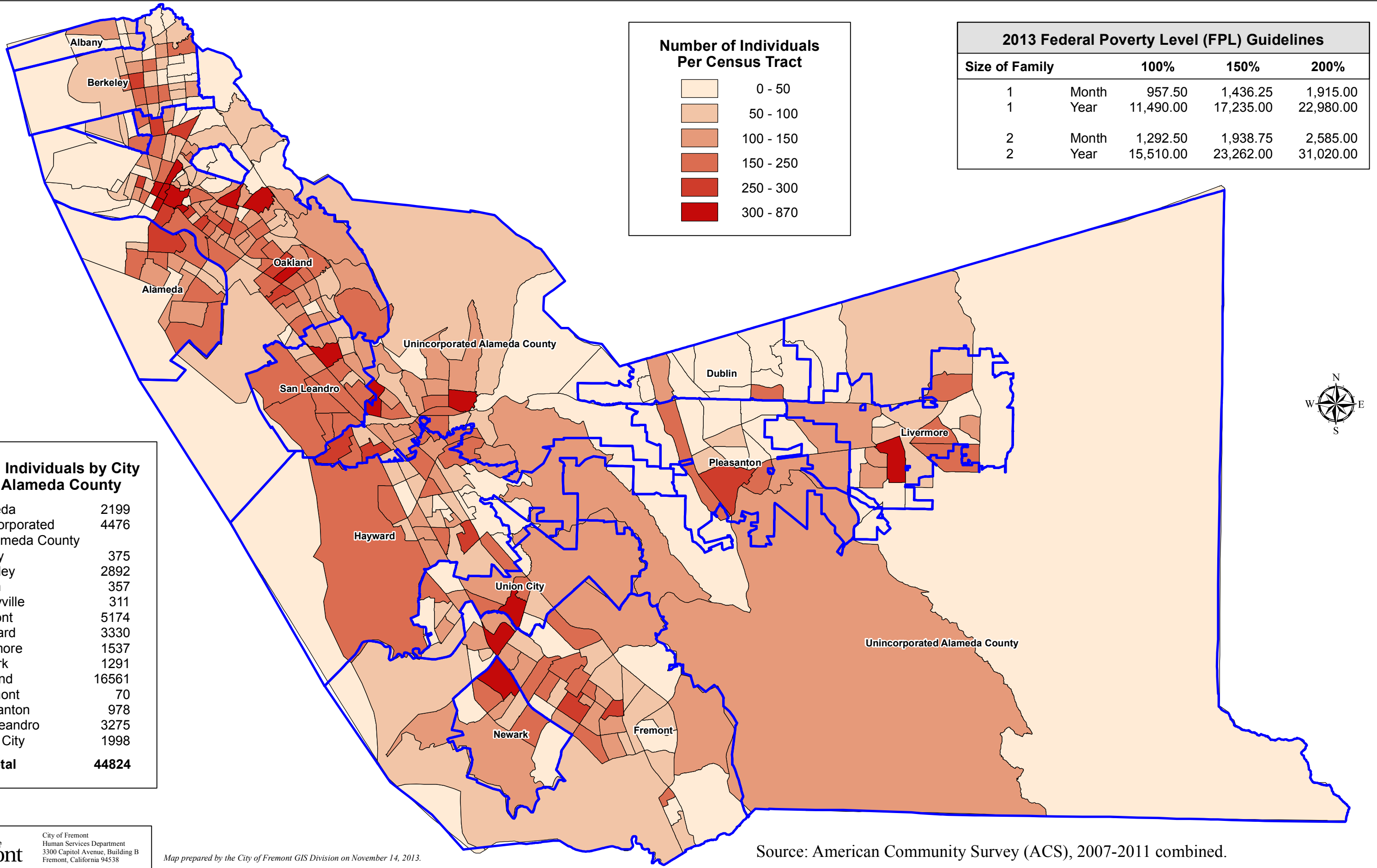


INDIVIDUALS OVER 65 YEARS WHO ARE 200% OF FEDERAL POVERTY LEVEL



2013 Federal Poverty Level (FPL) Guidelines

Size of Family		100%	150%	200%
1	Month	957.50	1,436.25	1,915.00
	Year	11,490.00	17,235.00	22,980.00
2	Month	1,292.50	1,938.75	2,585.00
	Year	15,510.00	23,262.00	31,020.00

Total Individuals by City in Alameda County

Alameda	2199
Unincorporated Alameda County	4476
Albany	375
Berkeley	2892
Dublin	357
Emeryville	311
Fremont	5174
Hayward	3330
Livermore	1537
Newark	1291
Oakland	16561
Piedmont	70
Pleasanton	978
San Leandro	3275
Union City	1998
Total	44824

